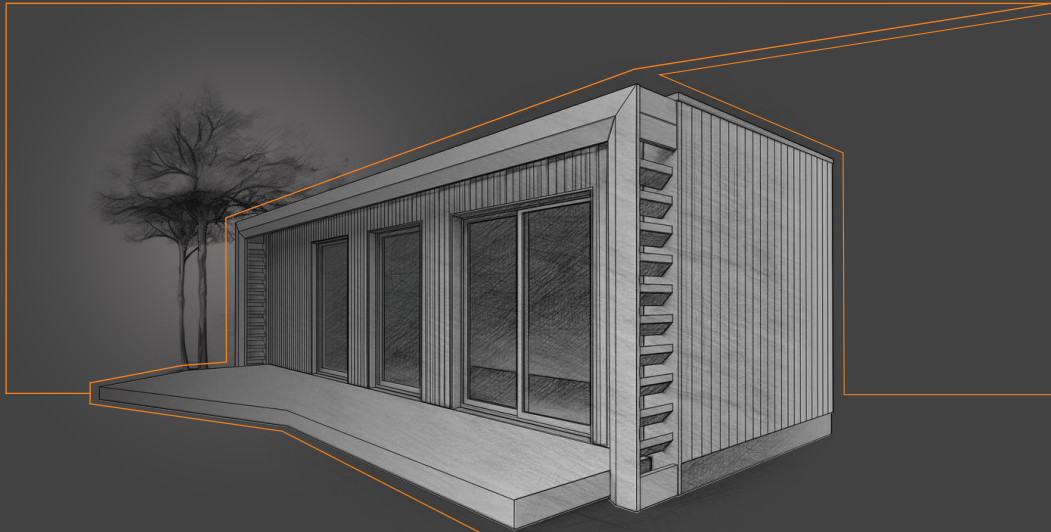


MONUBLOCK  
MODULAR BUILDINGS



model studio **living+**  
KOSE 35



When creating our buildings, we utilize natural and ecological materials: certified Scandinavian C24 timber, natural spruce three-layer board, acoustic panels made of wood wool with magnetic binder, wood wool, and other wood-derived materials.













The selection of materials and technologies we employ directly affects the well-being and comfort of users, the environment, and the well-being of our surroundings. In the design and construction processes, we abstain from using synthetic materials and chemicals.

From the production hall  
to **Your** favorite relaxation spot



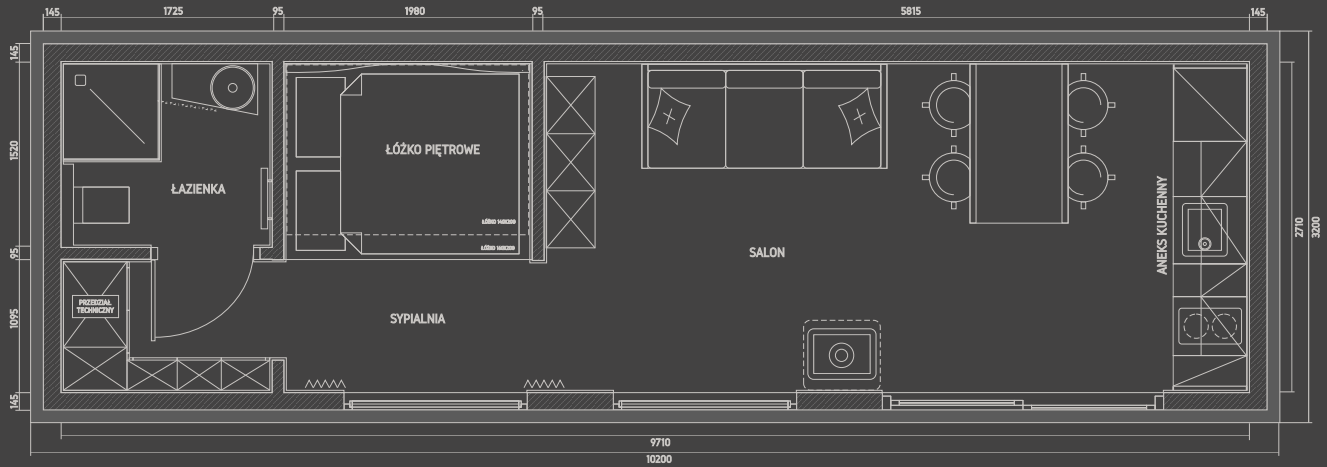
When designing our building, we took into consideration its placement in the landscape. The panoramic windows open up to the expanse and natural beauty, which, filled with light, exude tranquility and a peaceful spirit. High-quality, well-thought-out finishes, furnishings, and equipment create a unique and comfortable space enclosed within 32 square meters. Additionally, this space is extended by a modular terrace measuring 20 square meters. The employed natural materials make our building healthy and ecological.

Why is it worth taking advantage of our offer?:

- |  |   |
|--|---|
|  panoramic windows, HS-type entrance door _____ ✓ |  wood-burning fireplace _____ ✓        |
|  living room with a kitchenette _____ ✓           |  electric underfloor heating _____ ✓   |
|  bathroom with a shower _____ ✓                   |  energy-efficient LED lighting _____ ✓ |
|  bedroom for 4 people _____ ✓                     |  natural materials _____ ✓             |
|  modular terrace _____ ✓                          |  acoustic insulation _____ ✓           |
|  technical compartment _____ ✓                    |  heat recovery ventilation _____ ✓     |

CHARACTERISTIC

model studio **living+**  
**KOSE 35**



#### Structural Features / Equipment:

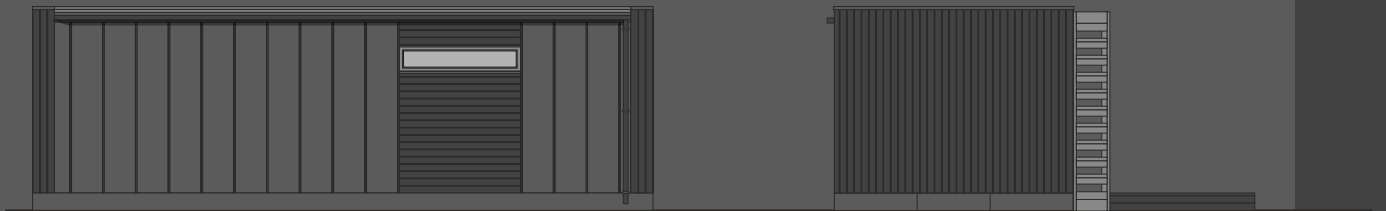
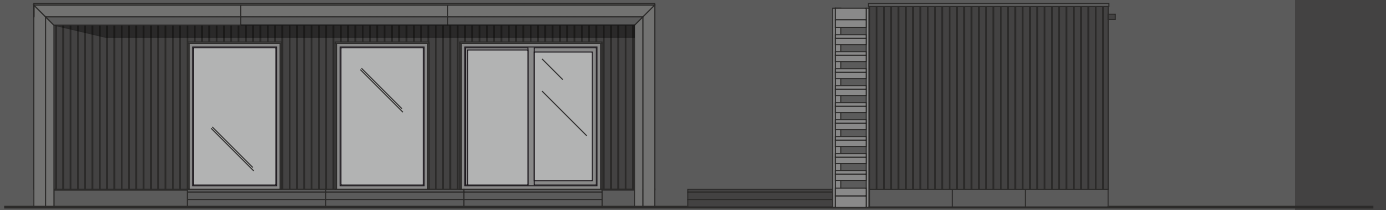
Wooden construction made of C24 structural timber, with a thickness of 15 cm for walls, and 20 cm for the floor and roof,  
 Insulation for the structural wall - mineral wool / wood wool, 15 cm and 20 cm,  
 Ventilated facade made of facade boards or metal sheets - tongue-and-groove panels,  
 Roof covered with a 1.5 mm BAUDER membrane,  
 Panoramic aluminum windows as per the design - ALUPROF,  
 Water, sewage, and electrical installation according to the design,  
 Interior covering - three-layer spruce board, Scandinavian Huntonit wall panels,  
 OSB board, Gypsum board.

#### Technical Specification:

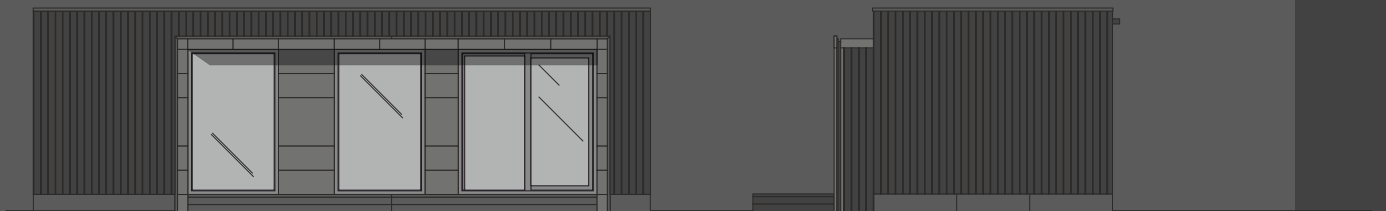
Number of occupants: 4.  
 Area: 32 m<sup>2</sup>.  
 Length: 10.2 m.  
 Width: 3.2 m.  
 Height: 3.4 m.  
 Living room with a kitchenette: 15.5 m<sup>2</sup>.  
 Bedroom: 5.4 m<sup>2</sup>.  
 Bathroom: 2.6 m<sup>2</sup>.  
 Terrace: 20 m<sup>2</sup>.

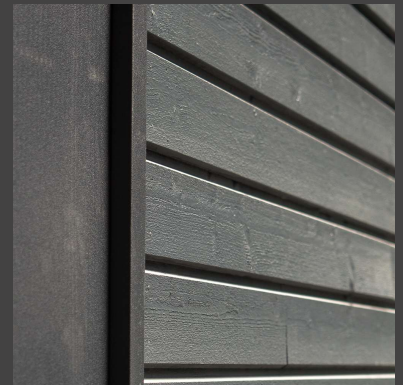
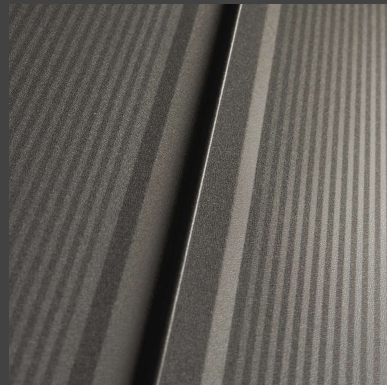
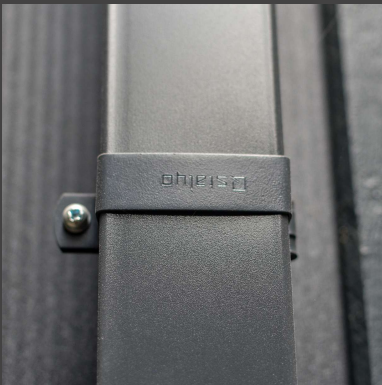
Elevation Plans: KOSE 35 is available in two versions of front elevation roofing.

1. Elevation with latticed cladding.



Elevation with full cladding across window openings.



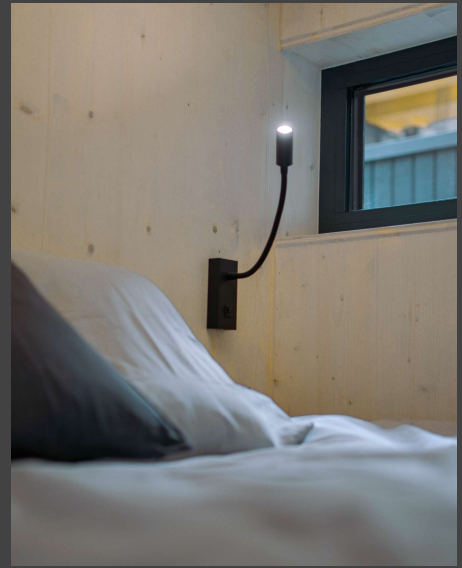




INTERIOR

model studi living+  
KOSE 35

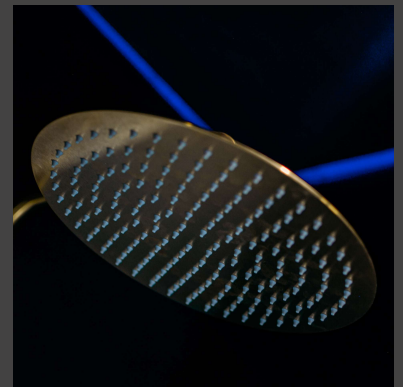








INTERIOR



## MONOBLOCK

We manufacture our modules in an industrial hall located in Nowa Sól, where the former Lower Silesia metallurgical plants „Dozamet” were situated. The building in which we operate among the former employees was colloquially referred to as the "Monoblock," and we borrowed the name for our business.

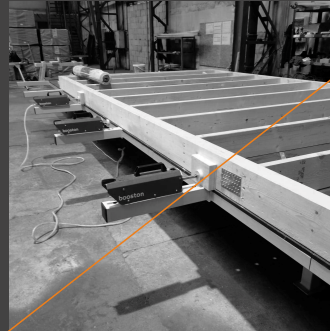
Individual building elements (floor slab, walls, ceiling, and roof) are assembled along with installations on a mounting table equipped with hydraulic actuators. Subsequently, the finished individual components are transported and assembled into a whole using cranes.

Once the building structure is assembled, craftsmen proceed to create the external facade, and interior work is carried out as well. Furniture and fittings are also handcrafted by us, utilizing the same materials we use for wall finishes, maintaining consistency throughout the interior.

Ultimately, the building is finished and ready for occupancy or in a developer's state for personal arrangement. It is then transferred onto a truck using a crane, from where the entire world is open for the delivery and installation of our product.

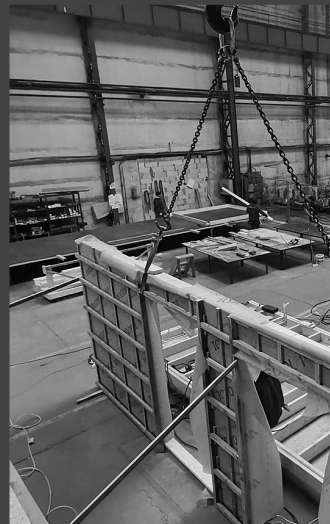
In our work, we prioritize quality, durability, design, and the specific nature of the materials used. We emphasize natural materials and draw inspiration from Scandinavian architecture.

Our approach is rooted in the rejection of everything that is not straightforward.



## BIURO PROJEKTOWE

Our office has experience in designing modular and frame buildings, as well as traditional construction technology. Our team of architects, structural engineers, plumbing and electrical system designers, and interior architects ensures projects are of the highest quality. Additionally, they provide support throughout all stages of investment realization.



WORKSHOP / OFFICE

model studiuliving+  
KOSE 35

MONOBLOCK  
MODULAR BUILDINGS

WWW.MONOBLOCK.PL

Marszałka Józefa Piłsudskiego 40  
67-100 Nowa Sól  
POLAND

+48 780 450 025, +48 513 908 052  
e-mail: info@monoblock.pl

OUR PARTNERS:



**SIGA**<sup>+</sup>  
1986

 **SÖDRA**

 **primagran**

**BAUDER**  
making roofs secure.

**STEICO**

  
**DACH STAL**